

# C-PCLC NEWSLETTER

We are in Action Period 2 - **HOW**

## **DUE:**

- **5** staff members from each facility PLEASE COMPLETE at least **1** module (or more) from CAPC
- Case Learning Summary for **Open Office Hours**
- **WORKPLAN ASAP**
- Tracking Tool **monthly**

(week of December 6<sup>th</sup>)



## Upcoming Dates:

### Open Office Hours:

Thursday, December 16<sup>th</sup> (8-9am)

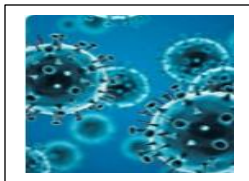
### C-PCLC Live Sessions:

**Action Period 3: February 14<sup>th</sup>, 2022, (9am-1pm)**

**Summative Conference: June 2nd, 2022, (9am-2pm)**

## COVID RESOURCES

### Update on Omicron (who.int)

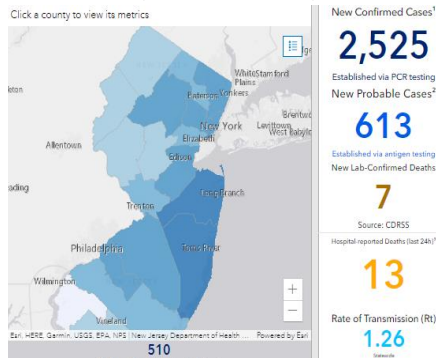


## Recommended CME/CEUs

[Delivering Serious News](#) | [Center to Advance Palliative Care \(capc.org\)](#)



## Covid-19 Update from NJ DOH (December 6<sup>th</sup>)



Dr. Brenda Matti-Orozco  
Medical Director, Palliative Care  
Morristown Medical Center, Chilton Medical Center

“Palliative care means sharing the patient’s (and family’s) journey across the continuum of health, aging, and illness. I choose to work in palliative care because...it has allowed me to practice the heart of medicine, with joy and passion.”

APPREHENSION, UNCERTAINTY, WAITING, EXPECTATION, FEAR OF SURPRISE, DO A PATIENT MORE HARM THAN ANY EXERTION.

FLORENCE NIGHTINGALE



## Recommended Video:

### Early Palliative Care: a video for health and care professionals | The University of Edinburgh

Early Palliative Care: a video for health and care professionals

\*This video is intended for health and care professionals interested in promoting early palliative care. It is available in English, Spanish, Italian, Portuguese and French.

This short film aims to help health and care professionals to identify people who are living with progressive illnesses better to assess their needs in a timely manner and to start discussing and planning future care with them.

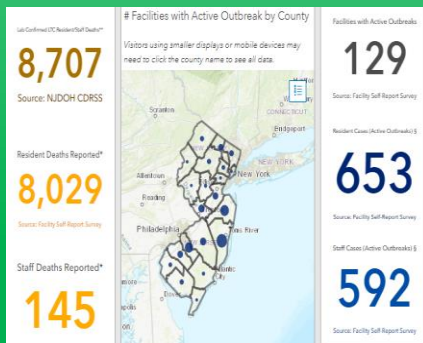
It explains the reasons for early palliative care. Early palliative care improves the quality and in some cases, may even prolong life, to promote "holistic medicine," an approach which looks at the person's health and care across a range of decisions-making, from the patient's physical to their emotional.

Read the full report [Seeking Safer Health](#)

Clinicians, patients and families can all benefit from carefully integrating early palliative care with ongoing treatment as people can both live and die well.

This information only uses data based on studies or research into patients, families, doctors, nurses and other health and care professionals about people's experiences living with serious health and dying. 'Palliative Care from Diagnosis to Death' was published in February 2021 in the BMJ.

Read the full article here.



## Contact Us:

[pallcollab@atlanticehealth.org](mailto:pallcollab@atlanticehealth.org)  
[lauren.salvatore@atlanticehealth.org](mailto:lauren.salvatore@atlanticehealth.org)  
 862-259-1095  
[Brenda.matti-orozco@atlanticehealth.org](mailto:Brenda.matti-orozco@atlanticehealth.org)  
[Yvette.vieira@atlanticehealth.org](mailto:Yvette.vieira@atlanticehealth.org)