

C-PCLC NEWSLETTER

We are in Action Period 2 - **HOW**

DUE:

- **5** staff members from each facility PLEASE COMPLETE at least **1 module (or more)** from CAPC
- Case Learning Summary for **Open Office Hours**
- **WORKPLAN ASAP**
- Tracking Tool **monthly**

(week of November 22nd)



Upcoming Dates:

Happy Thanksgiving!



Open Office Hours:

Friday, December 3rd (8-9am)

C-PCLC Live Sessions:

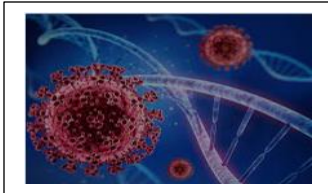
Action Period 3: February 14th, 2022, 9am-1pm

Summative Conference: June 2nd, 2022, 9am-2pm

COVID RESOURCES

COVID-19
Rapid Response Resources Hub

[COVID-19 Pandemic | FAQs | COVID-19 Response Resources Hub | Center to Advance](#)

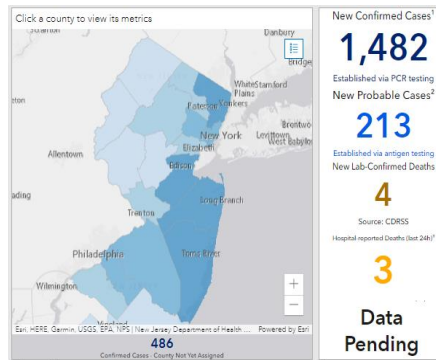


Recommended CME/CEUs

[An In-Depth Look at Palliative Care and Its Services | Center to Advance Palliative Care \(capc.org\)](#)



Covid-19 Update from NJ DOH November 22nd, 2021

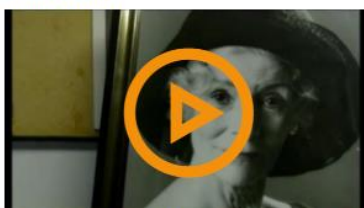


Recommended Videos for Your Patients:

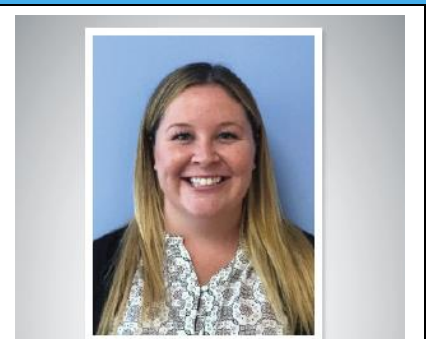
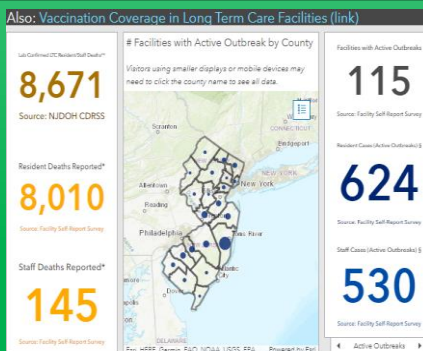
(click on image below)

[Advance Care Planning Videos for Patients and Families \(atlanticealth.org\)](#)

Anna's Story

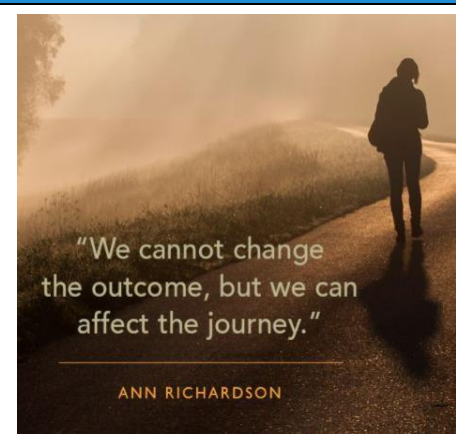


This powerful video illustrates the importance of advance care planning, and highlights the impact it has on patient, family members, caregivers, and health care providers.



Alison Allocco, LSW

“Advocating for our patients’ needs, ensuring timely transitions of care, breaking through barriers to receiving care all while ensuring meaningful connections between members of the care team. Patients need to be armed with knowledge and the ability to advocate for themselves and their needs for successful outcomes. Unfortunately, many times, patients feel overwhelmed by the health care system, leading them to back down. Care coordination promises the patient a dedicated person to be sure their voice is heard, their needs are met and to be able to break through silos, making their health care needs seem less daunting.”



ANN RICHARDSON

Contact Us:

pallcollab@atlanticealth.org
lauren.salvatore@atlanticealth.org
 862-259-1095
Brenda.matti-orooco@atlanticealth.org
Yvette.vieira@atlanticealth.org