

C-PCLC NEWSLETTER

(week of January 24th)



We are in Action Period 2 - **HOW**

DUE:

- **5** staff members from each facility **PLEASE COMPLETE** at least **1 module (or more)** from CAPC
- Case Learning Summary for **Open Office Hours**
- **WORKPLAN ASAP**
- Tracking Tool **monthly**

COVID RESOURCES

[Omicron is hitting nursing homes so hard that some facilities are shutting down : Shots - Health News : NPR](#)

THE CORONAVIRUS CRISIS

The nursing home staffing crisis right now is like nothing we've seen before

January 20, 2022 6:31 PM ET

RHITU CHATTERJEE



May 19th arrives for dinner at Riverbath, an independent senior housing facility in New York. April 1, 2021. COVID-19 infections are soaring again at U.S. nursing homes because of the omicron wave, and deaths are climbing too. That's leading to new restrictions on family visits and a renewed push to get more residents and staff members vaccinated and boosted.

Community Palliative Care Learning Collaborative Portal:

[Palliative Care - Community Palliative Care Learning Collaborative \(pallcarenj.org\)](#)

Community Palliative Care Learning Collaborative

Helping health care providers identify patients suffering with a serious illness, provide them with palliative care options, and deliver appropriate care according to each patient's preferences.

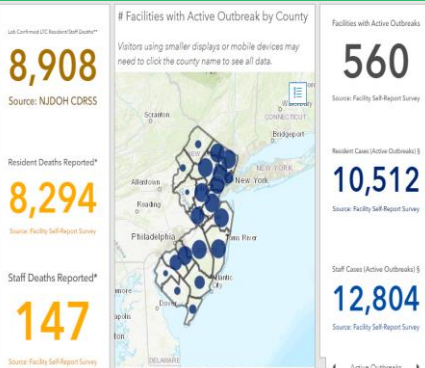
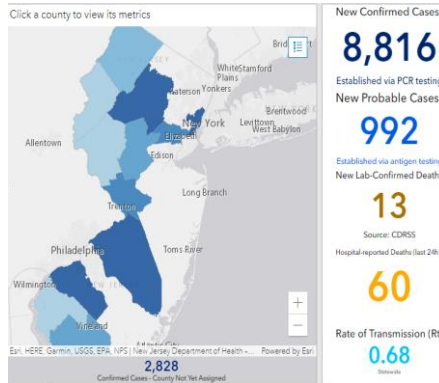
Learn More

Recommended CME/CEUs

[Conducting a Family Meeting | Center to Advance Palliative Care \(capc.org\)](#)



Covid-19 Update from NJ DOH (January 24th)



Upcoming Dates:

Open Office Hours:

***To Resume: Thursday, Feb. 17th (8-9am)**

C-PCLC Live Sessions:

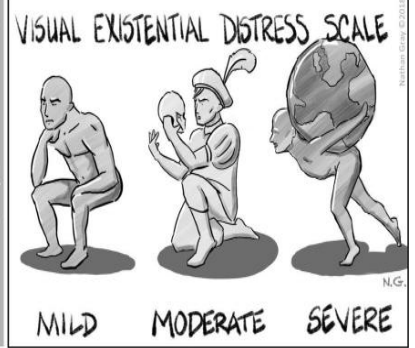
Action Period 3: March 30th, 2022, (12:30-4:30pm)

Summative Conference: June 2nd, 2022, (9am-2pm)



Sharon McSorley, RN
Ambulatory Care Coordinator
Atlantic Health System

“Palliative care embraces the patient with comfort for the body, the spirit, and the mind when confronted with a serious illness.”



Contact Us:

pallcollab@atlanticealth.org
lauren.salvatore@atlanticealth.org
862-259-1095
Brenda.matti-orocho@atlanticealth.org
Yvette.vieira@atlanticealth.org