

# C-PCLC NEWSLETTER

(week of September 6th)



We are in Action Period 1 - **WHO**

To identify patients who would benefit from palliative care (PC) and identify available PC resources

**DUE NOW** (click through link):

**FACILITY PRE-ASSESSMENT SURVEY**

&

**WORK PLAN**

**TRACKING SHEET-Due Oct 4th**

## Upcoming Dates

### Open Office Hours

Thursday, September 16<sup>th</sup>, 8-9am

### C-PCLC Live Sessions

#### Action Period 2

October 25, 2021, 9am – 1pm

#### Action Period 3

February 14, 2022, 9am-1pm

#### Action Period 4

June 2, 2022, 9am-2pm

## COVID RESOURCES

# Center to Advance Palliative Care

Goals of Care Conversations in the Time of COVID →

Responding to Emotion During Difficult Conversations in the COVID Era →

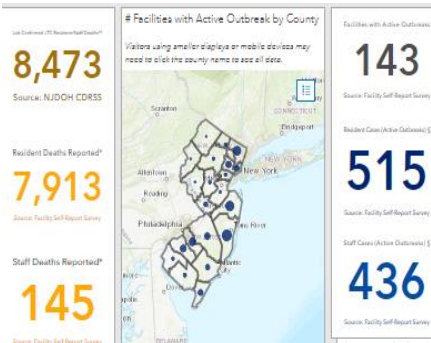
Advance Care Planning Conversations in the Time of COVID →

## Recommended CME/CEUs

[Advance Care Planning Course | Role of Physicians | Center to Advance Palliative Care \(capc.org\)](#)

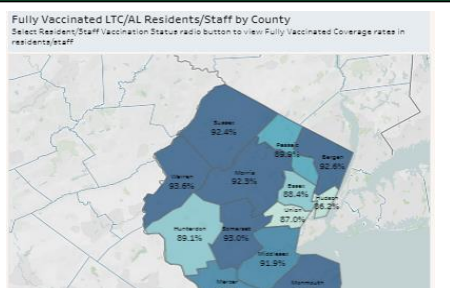


## Covid-19 Update from NJ DOH September 7<sup>th</sup>, 2021



## Fully Vaccinated LTC/AL Residents/Staff by County

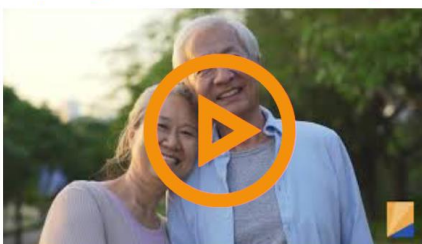
(c/o Vaccination Coverage in New Jersey LTC Facilities (nj.gov))



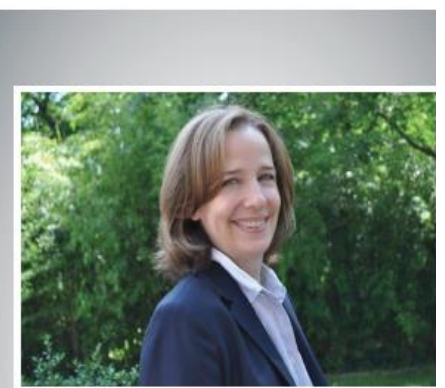
## Recommended Videos for Your Patients:

(click on image below)

**Having the Conversation:  
Preparing for Advance Care Planning**



We know it can be difficult and sometimes scary to think and talk about health care as you age or have a serious illness. This video provides an overview of some important steps you can take to start the conversation about your health care wishes, as well as some of the resources available to help.



Sharon Burniston, Chaplain

“ I love palliative care because we use a holistic approach. We understand that each patient is unique; and whether we are treating physical symptoms or having difficult conversations, we consider how the mind, body, and spirit all come together and impact each other. ”



## Contact Us:

[pallcollab@atlantichealth.org](mailto:pallcollab@atlantichealth.org)

[lauren.salvatore@atlantichealth.org](mailto:lauren.salvatore@atlantichealth.org)

862-259-1095

[Brenda.matti-orocho@atlantichealth.org](mailto:Brenda.matti-orocho@atlantichealth.org)

[Yvette.vieira@atlantichealth.org](mailto:Yvette.vieira@atlantichealth.org)